

# LS1 Control and Firmware Install Guide

This guide assists you with installing the LS1 Control software and updating your LS1 firmware.

*Note: if you experience difficulties with the installation or update, please enter a service ticket in our [online webform](#).*

The latest version of the LS1 Control software can be found [here](#). It has a version of the LS1 firmware built in. The LS1 web page informs you if there is a more recent firmware version available. In that case you can download the firmware as a separate file and open that from within the LS1 Control software, as explained below.

*Attention to UC1 users, your UC1 has to be updated to at least f/w version 1.2.7 in order to let the LS1 Control software work smoothly. Instructions about how to do this can be found in the [UC1 update guide](#).*

Download the LS1 Control installer for your OS (Windows, Mac or Linux) from the respective folder. Execute the installer to install the LS1 Control application on your computer.

*Note for Windows users with an LS1i or UC1: please install the Grimm USB Driver before running the LS1 Control software. This is done by connecting the LS1i or UC1, then unzipping grimm\_usb\_driver.zip and running the setup.exe application inside the grimm\_usb\_driver folder. If you have used your LS1i or UC1 with the old LS1 PC remote software, the driver is already installed and you can skip this step.*

## Running the LS1 Control

First, make sure that your Grimm Audio LS1i USB interface, Grimm Audio 'USB to cat5' conversion cable, or Grimm Audio UC1 is connected to both your computer and your LS1 system. Run the LS1 Control application by double clicking the icon. You will see a window similar to the one below. If there are no LS1s connected to your computer, the LS1 Control will show a 'looking for LS1s' message window.

With the LS1 Control you can control all LS1 functions and settings. Please consult the LS1 manual for more information.



## Updating your LS1

With the LS1 Control you can update your LS1 firmware. This has to be done with one speaker at a time. The only connection should be from your USB device to the LS1 cat5 "control in" port.

Please disconnect the cat5 cable from the bottom 'thru' cat5 connector of the connected LS1. The update process will not start if the software finds two or more LS1s in the system.

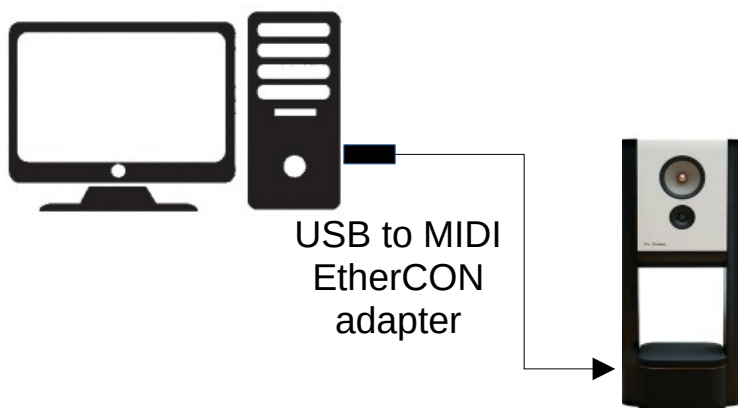
*Note: If your LS1's serial number (indicated near the power switch) is lower than 2.004.000, you need to connect the 'loopback connector' that came with your system to the Control Thru RJ45 port of the connected LS1.*

There are two ways to connect your PC to connect the speaker:

Method A – LS1i



Method B – USB to MIDI Ethercon adapter (also known as the LS1 USB Control Cable)

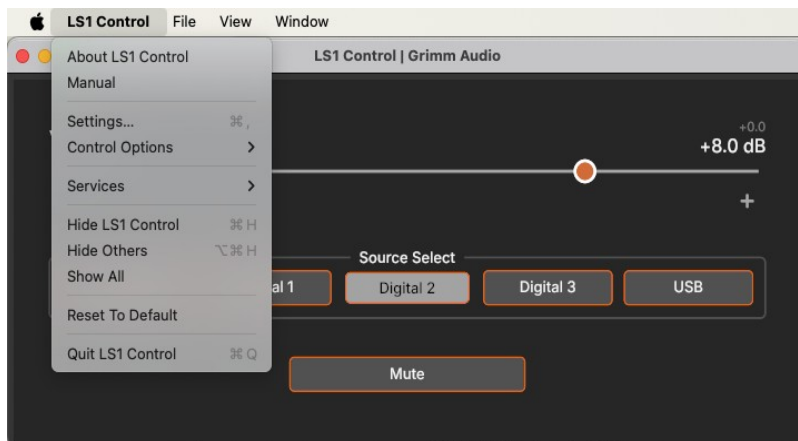


Check the following:

1. Make sure that no MU1 or LS1r (hardware remote) is connected and that no MIDI-communicating software is running on your PC. We recommend to turn off all other applications, just to be sure.
2. Turn the LS1 on.

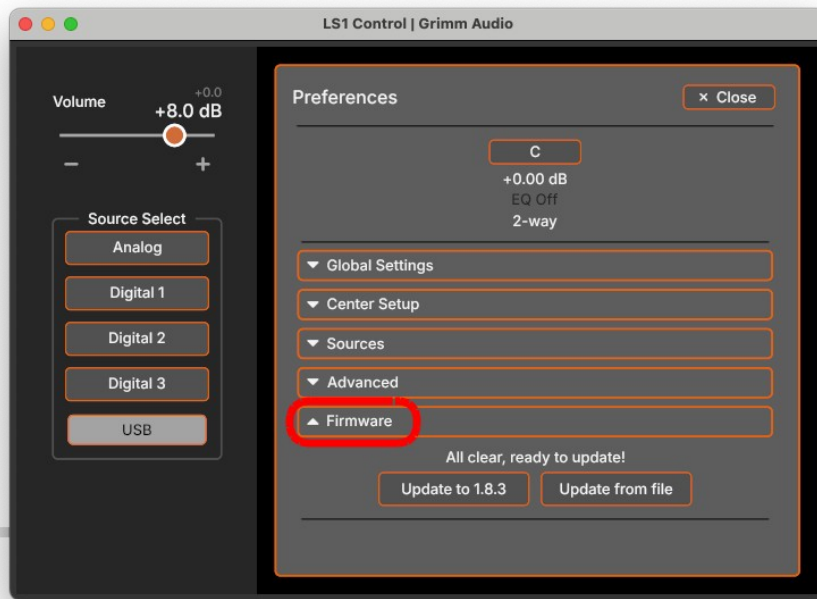
Now you can run the update of your LS1 firmware with the LS1 Control software.

1. Open the LS1 Control software.
2. Go to the settings via the menubar:

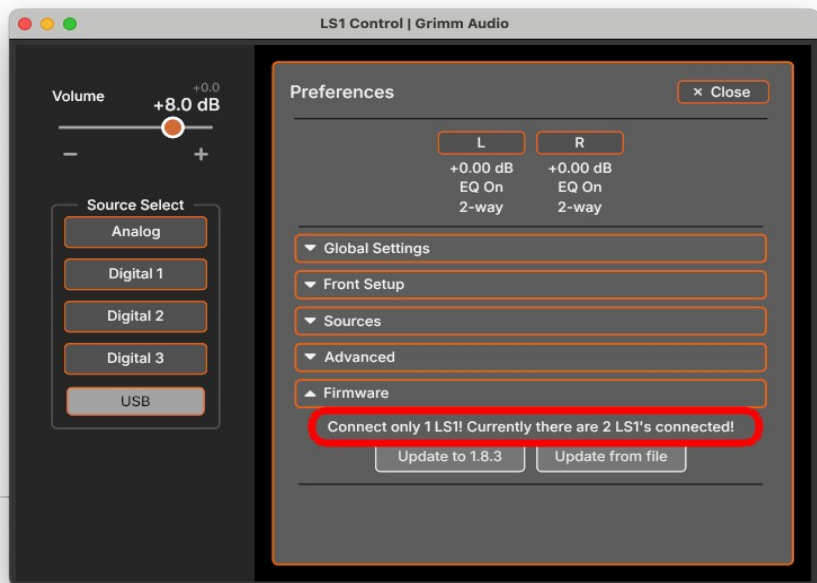


- Windows: Tools -> Preferences
- Mac: LS1 Control -> Settings
- Linux: Edit -> Settings

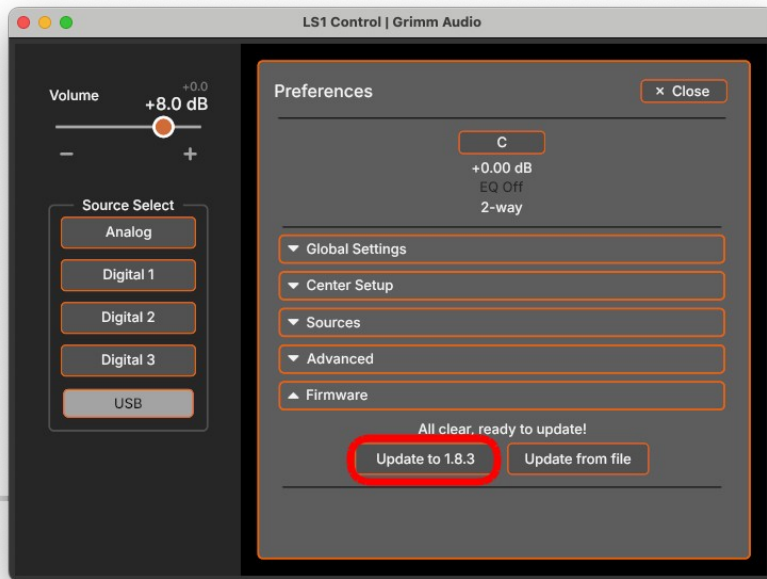
3. Open the "Firmware" header at the bottom of the list.



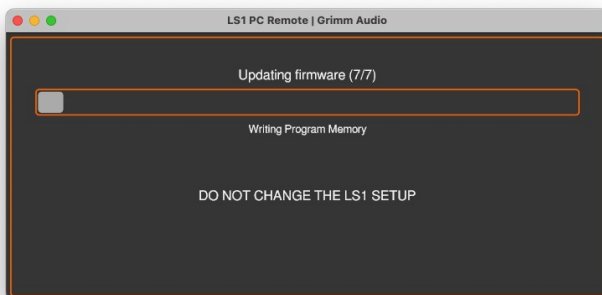
*Make sure only one LS1 is connected to the PC.*



Click the left button "Update to x.x.x". In case you downloaded a more recent firmware version file from the Grimm Audio website, use the right button "Update from file" instead and locate the downloaded file in the dialog.



3. Wait patiently until the update has completely finished, this takes up to 5 minutes when updating from v1.6.



Repeat these steps for all your LS1s.

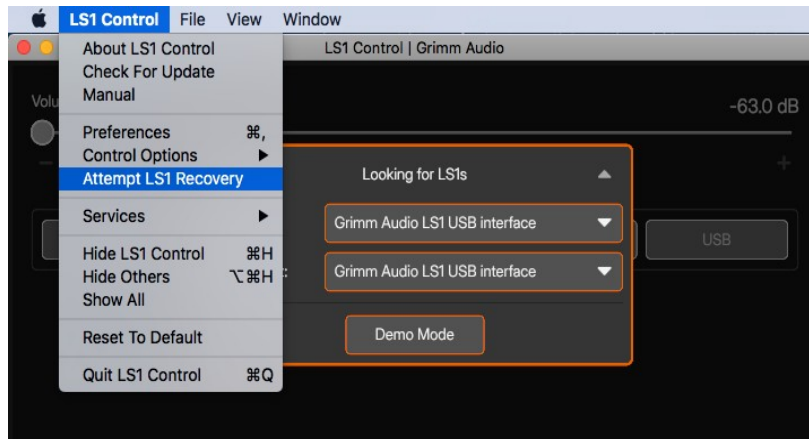
And then, enjoy your updated LS1 loudspeakers!

## Trouble shooting

If something went wrong while updating your LS1's firmware and it cannot be detected by the LS1 Control anymore, a recovery can be attempted. In most cases this will successfully recover the LS1 without any loss of settings.

This can be done as follows:

1. Click "Attempt LS1 Recovery" via the menubar:



- Windows: Help -> Attempt LS1 Recovery
- Mac: LS1 Control -> Attempt LS1 Recovery
- Linux: Help -> Attempt LS1 Recovery